

Note: Some designs in this collection may have been created using unique special stitches and/or techniques. To preserve design integrity when rescaling or rotating designs in your software, always rescale or rotate designs using the handles directly on-screen.



CM480_48 Stitch'n'Turn Fox
2.07 X 3.55 in.
52.58 X 90.17 mm
5,253 St. ✿



CM481_48 Stitch'n'Turn Raccoon
2.08 X 3.26 in.
52.83 X 82.80 mm
3,360 St. ✿



CM482_48 Stitch'n'Turn Deer
3.00 X 3.38 in.
76.20 X 85.85 mm
5,543 St. ✿



CM483_48 Stitch'n'Turn Bunny
2.20 X 3.76 in.
55.88 X 95.50 mm
3,725 St. ✿



CM484_48 Stitch'n'Turn Bear
2.63 X 3.41 in.
66.80 X 86.61 mm
4,325 St. ✿



CM485_48 Stitch'n'Turn Lamb
3.19 X 3.20 in.
81.03 X 81.28 mm
3,105 St. ✿



CM486_48 Stitch'n'Turn Horse
2.09 X 3.53 in.
53.09 X 89.66 mm
3,389 St. ✿



CM487_48 Stitch'n'Turn Cow
3.14 X 3.72 in.
79.76 X 94.49 mm
6,459 St. ✿



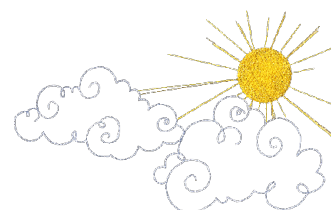
CM488_48 Stitch'n'Turn Chicken
2.11 X 3.19 in.
53.59 X 81.03 mm
1,618 St. ✿



CM489_48 Stitch'n'Turn Pig
2.24 X 3.51 in.
56.90 X 89.15 mm
2,801 St. ✿



CM490_48 Flowers
2.40 X 6.40 in.
60.96 X 162.56 mm
5,410 St. ✿ L

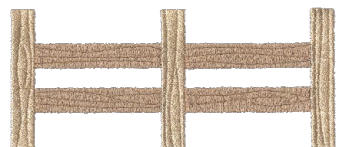


CM491_48 Sky
4.65 X 7.57 in.
118.11 X 192.28 mm
3,961 St. ✿ L

✿ Design contains a loose fill.
✿ Some white areas shown are not stitched.

L Design is larger than 5" (127 mm) in either direction.
S Design is smaller than 1.5" (38.1 mm) in either direction.

Note: Some designs in this collection may have been created using unique special stitches and/or techniques. To preserve design integrity when rescaling or rotating designs in your software, always rescale or rotate designs using the handles directly on-screen.



CM492_48 Fence
2.32 X 5.50 in.
58.93 X 139.70 mm
12,084 St. ✿ L



CM493_48 Forest Appliqué
5.26 X 5.31 in.
133.60 X 134.87 mm
20,228 St. ✿ L



CM494_48 Barn Appliqué
4.74 X 4.96 in.
120.40 X 125.98 mm
13,147 St. ✿



CM495_48 Stitch'n'Turn Pink Monster
4.20 X 6.70 in.
106.68 X 170.18 mm
10,133 St. ✿ ✿ L



CM496_48 Stitch'n'Turn Green Monster
5.14 X 6.15 in.
130.56 X 156.21 mm
11,047 St. ✿ ✿ L



CM497_48 Stitch'n'Turn Blue Monster
5.38 X 5.91 in.
136.65 X 150.11 mm
13,018 St. ✿ ✿ L



CM498_48 Stitch'n'Turn Jumbo Owl Appliqué
6.71 X 10.46 in.
170.43 X 265.68 mm
21,343 St. ✿ ✿ L



CM499_48 Stitch'n'Turn Jumbo Bear Appliqué
8.47 X 10.98 in.
215.14 X 278.89 mm
12,962 St. ✿ L

✿ Design contains a loose fill.
✿ Some white areas shown are not stitched.

L Design is larger than 5" (127 mm) in either direction.
S Design is smaller than 1.5" (38.1 mm) in either direction.

Listings below indicate color sample, stitching order and suggested thread color number in Isacord, YLI Fine Metallic, Yenmet or YLI Variegated threads.

CM480_48 Stitch'n'Turn

Fox

- 1. Placement Stitch.....0015
- 2. Belly & Face.....0015
- 3. Ears.....2560
- 4. Ears & Paws.....0020
- 5. Limb Outlines.....0933
- 6. Ribbon Placement Guide.....0931
- 7. Seam Stitch.....0931

CM481_48 Stitch'n'Turn

Raccoon

- 1. Placement Stitch.....2905
- 2. Ears.....2905
- 3. Mask.....2910
- 4. Face.....0020
- 5. Limbs.....2905
- 6. Ribbon Placement Guide.....3045
- 7. Seam Stitch.....3045

CM482_48 Stitch'n'Turn

Deer

- 1. Placement Stitch.....0970
- 2. Ears, Face & Belly.....0970
- 3. Ears.....2560
- 4. Mouth & Limbs.....1134
- 5. Face & Hooves.....0020
- 6. Ribbon Placement Guide.....0832
- 7. Seam Stitch.....0832

CM483_48 Stitch'n'Turn

Bunny

- 1. Placement Stitch.....0015
- 2. Belly.....0015
- 3. Ears & Nose.....2560
- 4. Eyes.....0020
- 5. Mouth & Limbs.....3810
- 6. Ribbon Placement Guide.....3750
- 7. Seam Stitch.....3750

CM484_48 Stitch'n'Turn

Bear

- 1. Placement Stitch.....0842
- 2. Belly & Muzzle.....0842
- 3. Ears.....2560
- 4. Eyes & Nose.....0020
- 5. Mouth & Limbs.....0870
- 6. Ribbon Placement Guide.....1355
- 7. Seam Stitch.....1355

CM485_48 Stitch'n'Turn

Lamb

- 1. Placement Stitch.....0105
- 2. Muzzle.....0105
- 3. Ears.....2560
- 4. Face.....0020
- 5. Hooves.....0112
- 6. Ribbon Placement Guide.....0015
- 7. Seam Stitch.....0015

CM486_48 Stitch'n'Turn

Horse

- 1. Placement Stitch.....0015
- 2. Spot.....0015
- 3. Muzzle.....0861
- 4. Limbs.....1346
- 5. Face & Hooves.....0020
- 6. Ears & Mouth.....2560
- 7. Ribbon Placement Guide.....0853
- 8. Seam Stitch.....0853

CM487_48 Stitch'n'Turn

Cow

- 1. Placement Stitch.....2051
- 2. Nose.....2051
- 3. Spots.....0112
- 4. Horns.....0672
- 5. Ears.....2560
- 6. Eyes & Nose.....0020
- 7. Legs.....0182
- 8. Hooves.....0150
- 9. Ribbon Placement Guide.....0015
- 10. Seam Stitch.....0015

CM488_48 Stitch'n'Turn

Chicken

- 1. Placement Stitch.....0922
- 2. Wings.....0922
- 3. Wattle.....1902
- 4. Beak.....1010
- 5. Eyes.....0020
- 6. Ribbon Placement Guide.....0310
- 7. Seam Stitch.....0310

CM489_48 Stitch'n'Turn

Pig

- 1. Placement Stitch.....2171
- 2. Nose.....2171
- 3. Eyes & Nose.....0020
- 4. Ears.....2560
- 5. Legs & Mouth.....1430
- 6. Hooves.....0112
- 7. Ribbon Placement Stitch.....1060
- 8. Seam Stitch.....1060

CM490_48 Flowers

- 1. Dark Grass.....5633
- 2. Light Grass.....0352
- 3. Pink Flowers.....2650
- 4. Red Flowers.....1805
- 5. Stamens.....0800

CM491_48 Sky

- 1. Sun.....0608
- 2. Sun Shimmers.....7008
- 3. Clouds.....3963

CM492_48 Fence

- 1. Boards.....1161
- 2. Posts.....0761

CM493_48 Forest Appliqué

- 1. Placement Stitch.....5633
- 2. Cut Lines & Tackdowns.....5633
- 3. Roses.....2152
- 4. Rose Outlines.....2363
- 5. Leaves & Small Trees.....5822
- 6. Green Cover Stitch for Tree.....5633
- 7. Large Tree Trunk.....1161
- 8. Small Tree Trunks.....0941
- 9. Light Green Cover Stitch for Bush.....5822

CM494_48 Barn Appliqué

- 1. Placement Stitch.....2123
- 2. Cut Line & Tackdown.....2123
- 3. Door Braces.....0015
- 4. Barn Detail & Door Frame.....2123
- 5. Window.....1366
- 6. Barn Cover Stitches.....2123
- 7. Hay.....0640
- 8. Hay Linework.....0731
- 9. Roof.....0776
- 10. Roof Linework & Center Board.....0761

CM495_48 Stitch'n'Turn

Pink Monster

- 1. Placement Stitch.....0015
- 2. Mouth & Belly.....0015
- 3. Lips.....1430
- 4. Eyes & Nose.....0020
- 5. Ears & Limbs.....2155
- 6. Horn.....0520
- 7. Seam Stitch.....2508

CM496_48 Stitch'n'Turn

Green Monster

- 1. Placement Stitch.....5740
- 2. Nose & Limbs.....5740
- 3. Eye Patches.....2655
- 4. Eyes, Nose & Mouth.....0020
- 5. Ears & Belly.....3045
- 6. Horns & Hooves.....0870
- 7. Seam Stitch.....5415

CM497_48 Stitch'n'Turn

Blue Monster

- 1. Placement Stitch.....0015
- 2. Face & Belly Patches.....0015
- 3. Teeth.....4071
- 4. Nose.....3730
- 5. Eyes, Nostrils & Mouth.....0020
- 6. Limbs.....3730
- 7. Horns.....0970
- 8. Seam Stitch.....3654

CM498_48 Stitch'n'Turn

Jumbo Owl Appliqué

- 1. Placement Stitch.....2655
- 2. Eye & Belly Placement Stitch.....2655
- 3. Eye, Belly Cut Line & Tackdown.....2655
- 4. Belly Cover Stitch.....2655
- 5. Eyes & Wings.....3045
- 6. Eyes.....3350
- 7. Eye Cover Stitches.....2600
- 8. Beak & Feet.....0504
- 9. Pupils.....0020
- 10. Seam Stitch.....2600

CM499_48 Stitch'n'Turn

Jumbo Bear Appliqué

- 1. Placement Stitch.....0870
- 2. Mouth & Belly Placement Stitch.....0870
- 3. Mouth, Belly Cut Line & Tackdown.....0870
- 4. Mouth & Belly Cover Stitch.....0870
- 5. Mouth & Limbs.....1172
- 6. Eyes & Nose.....0020
- 7. Ears Placement Stitch.....0970
- 8. Ears Cut Line & Tackdown.....0970
- 9. Ear Cover Stitch & Eyes.....0970
- 10. Seam Stitch.....1355

Instructions

1. Hoop a single layer of Mesh CutAway stabilizer.
2. Spray the stabilizer lightly with Temporary Adhesive Spray™.
3. Stitch the first color, which is the “Placement Guide Stitch”.
4. Place a 5" square of Minkee® Fabric right side up onto the Mesh Stabilizer, being sure to cover the “Placement Guide Stitch”. See **Photo 1**.
5. Lightly spray a 4" square piece of WashAway topping with Temporary Adhesive Spray. Place the topping sprayed side down onto the Minkee® fabric.
6. Attach the hoop to the machine and select the Minkee® design of your choice to stitch. Embroider all but the last color of the design. See **Photo 2**.
7. Remove the hoop from the machine, but DO NOT remove the fabric from the hoop.
8. Clip all jump threads.
9. Gently tear away excess topping. (Do not wet to remove at this time).
10. Place another square of Minkee® right side down directly over the first piece. If desired, pin or tape at corners to secure.
11. Reattach the hoop to the machine and stitch the final color change (through both layers of fabric).
12. Remove the hoop from the machine and the fabric from the hoop.
13. Using embroidery scissors, carefully cut out the Minkee® project close to the stitching line. Clip curves as needed.
14. Cut a slit approximately 1 ½" long in the back (non-embroidered side). See **Photo 3**.
15. Turn the animal right side out. Use a chopstick to turn out corners and curves. See **Photo 4**.
16. Stuff as desired with polyester stuffing.
Slip stitch the slit closed.

Supplies:

- 2 pieces Minkee® fabric one inch larger than chosen design
- OESD Mesh CutAway Stabilizer
- OESD WashAway topping
- Temporary Adhesive Spray
- Isacord embroidery thread
- White polyester bobbin thread
- Embroidery machine
- Polyester stuffing (extra-soft stuffing is recommended)
- Hand needle

NOTE: Some designs may contain a Ribbon Placement Guide. This is an optional feature that allows you to turn your animals into ornaments if you so wish. To create a hanging loop, after stitching the Ribbon Placement Guide, create a loop out of 1/4" ribbon and place it within the guide with loop facing in and tails of the ribbon facing out. Lightly spray ribbon with Temporary Adhesive Spray to hold in place.



Photo 1

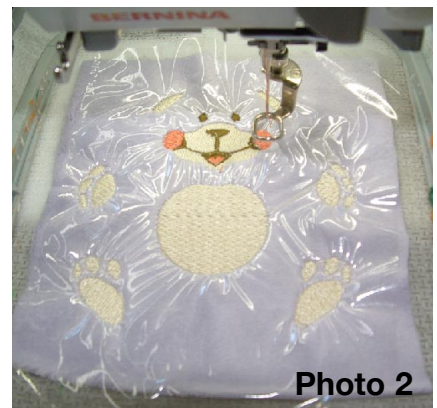


Photo 2

For Extra Fun:

Add definition stitching with a sewing machine or by hand.

Stitch ribbon bows or embellishments on your Pals to dress them up. Please keep in mind the age of the person to be using the Minkee and plan (or omit) add-ons accordingly.

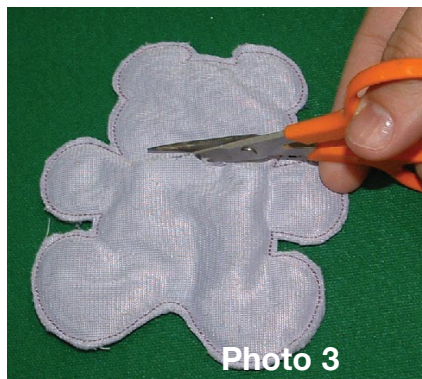


Photo 3

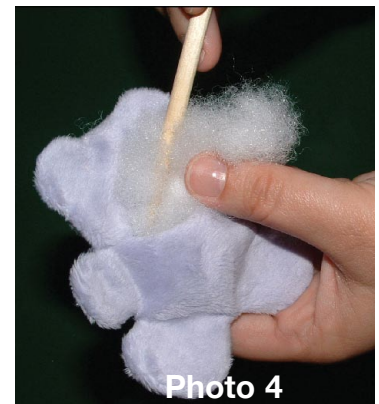


Photo 4