

Note: Some designs in this collection may have been created using unique special stitches and/or techniques. To preserve design integrity when rescaling or rotating designs in your software, always rescale or rotate designs using the handles directly on-screen.



CM544_48 Polar Bear Standing Up
2.30 X 4.28 in.
58.42 X 108.71 mm
13,807 St.



CM545_48 Polar Bear Sitting
3.11 X 3.51 in.
78.99 X 89.15 mm
12,180 St.



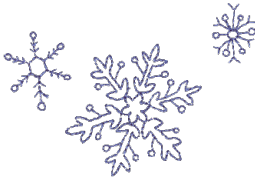
CM546_48 Skiing Polar Bear
4.17 X 4.20 in.
105.92 X 106.68 mm
11,251 St. ✿



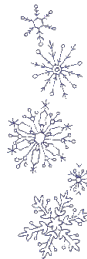
CM547_48 Polar Bear Snowboarding
3.81 X 4.79 in.
96.77 X 121.67 mm
18,659 St. ✿



CM548_48 Polar Bear & Snowflake
3.53 X 3.91 in.
89.66 X 99.31 mm
12,411 St. ✿



CM549_48 Snowflakes Accent
3.14 X 2.21 in.
79.76 X 56.13 mm
1,660 St. ✿



CM550_48 Snowflakes Border
2.02 X 6.05 in.
51.31 X 153.67 mm
3,284 St. ✿ L



CM551_48 Snowflakes Corner
4.52 X 4.81 in.
114.81 X 122.17 mm
4,812 St. ✿



CM552_48 JUMBO Stitch 'n' Turn Polar Bear
7.63 X 9.58 in.
193.80 X 243.33 mm
15,819 St. L



CM553_48 Sledding
4.33 X 3.57 in.
109.98 X 90.68 mm
17,895 St.



CM554_48 Penguin & Bear Hug
2.84 X 3.89 in.
72.14 X 98.81 mm
13,608 St.



CM555_48 Penguin Riding Polar Bear
3.84 X 3.78 in.
97.54 X 96.01 mm
13,308 St.



CM556_48 JUMBO Penguin Tower
2.84 X 7.47 in.
72.14 X 189.74 mm
19,324 St. L



CM557_48 Nice Hat
3.20 X 3.15 in.
81.28 X 80.01 mm
10,738 St.



CM558_48 Cool Penguin
1.91 X 2.73 in.
48.51 X 69.34 mm
6,686 St.



CM559_48 Tummyslide
3.93 X 2.13 in.
99.82 X 54.10 mm
5,090 St. ✿



CM560_48 Penguin in Stripes
1.26 X 2.90 in.
32.00 X 73.66 mm
4,812 St. S



CM561_48 Figure Skating Penguin
3.10 X 2.07 in.
78.74 X 52.58 mm
4,739 St.



CM562_48 Figure 8
3.17 X 2.84 in.
80.52 X 72.14 mm
4,174 St. ✿



CM563_48 Stitch 'n' Turn Penguin
4.42 X 6.59 in.
112.27 X 167.39 mm
8,495 St. L

✿ Design contains a loose fill.
✿ Some white areas shown are not stitched.

L Design is larger than 5" (127 mm) in either direction.
S Design is smaller than 1.5" (38.1 mm) in either direction.

Listings below indicate color sample, stitching order and suggested thread color number in Isacord, YLI Fine Metallic, Yenmet or YLI Variegated threads.

CM544_48 Polar Bear Standing Up

1. Fur	0182
2. White Fur Highlights & Scarf	0015
3. Light Gray Fur Shading	0142
4. Gray Fur Outlines	0108
5. Red Stripes	1805
6. Stripe Shading	1912
7. Eyes, Face & Shading	0020

CM545_48 Polar Bear Sitting

1. Fur	0182
2. White Fur Highlights & Scarf	0015
3. Dark Pink On Scarf	2241
4. Dark Red Scarf Outlines	2222
5. Gray Fur Shading	0142
6. Dark Gray Fur Outlines	0108
7. Eyes, Face & Shading	0020

CM546_48 Skiing Polar Bear

1. Fur	0182
2. Fur Highlights & Hat	0015
3. Gray Fur Shading	0142
4. Pink On Hat	2560
5. Purple On Hat	3130
6. Dark Pink On Hat	2508
7. Light Blue On Hat	3761
8. Green On Hat	5613
9. Dark Green On Hat	5326
10. Gold On Hat	0504
11. Dark Blue Hat Outlines	3641
12. Dark Gray Fur Outlines	0108
13. Ski Strap	0731
14. Eyes, Face, & Ski Poles	0020
15. Pole & Skis	1913

CM547_48 Polar Bear Snowboarding

1. Fur	0182
2. Fur Highlights & Hat	0015
3. Hat	5531
4. Gray Fur Shading	0142
5. Snowboard	6031
6. Dark Gray Fur Outlines	0108
7. Snowboard	5101
8. Yellow Board Stripes	6011
9. Light Blue Scarf & Board	4122
10. Blue Scarf	4103
11. Eyes & Inside Mouth	0111
12. Lens	7030
13. Scarf & Goggles	3902
14. Face, Paws & Shading	0020

CM548_48 Polar Bear & Snowflake

1. Fur	0182
2. Fur Highlights & Scarf	0015
3. Light Gray Fur	0142
4. Green On Scarf	5730
5. Pink On Scarf	2520
6. Purple On Scarf	2905
7. Gray Fur Outlines	0108
8. Eyes, Face, & Fur	0020
9. Snowflake	3810

CM549_48 Snowflakes Accent

1. Single Color Design	3810
------------------------	------

CM550_48 Snowflakes Border

1. Single Color Design	3810
------------------------	------

CM551_48 Snowflakes Corner

1. Single Color Design	3810
------------------------	------

CM552_48 JUMBO Stitch 'n' Turn Polar Bear

1. Placement Stitch	0015
2. Nose	4071
3. Eyes, Nose, & Mouth	0020
4. Footpads	0142
5. Ears, Arms, & Legs	3572
6. Seam Stitch	0015

CM553_48 Sledding

1. Bear Fur	0182
2. Penguin, Bear Fur & Hat	0015
3. Bear Light Gray Shading	0142
4. Penguin Light Gray Shading	0131
5. Penguin Gray Outlines	0152
6. Bear Dark Gray Outlines	0108
7. Sled	5643
8. Sled Rim	5610
9. Black on Penguin	0132
10. Bear Mouth	2241
11. Light Blue Hat	3840
12. Dark Blue on Hat & Swirls	3810
13. Yellow on Scarf	0504
14. Orange on Scarf	1010
15. Dark Orange on Scarf	1526
16. Faces & Paw	0020

CM554_48 Penguin & Bear Hug

1. Bear Fur	0182
2. Bear Highlights & Penguin Feathers	0015
3. Penguin Light Gray Shading	0131
4. Penguin Gray Feathers Shading	0152
5. Bear Light Gray Shading	0142
6. Bear Dark Gray Outlines	0108
7. Penguin	0132
8. Face	0020

CM555_48 Penguin Riding Polar Bear

1. Bear Fur	0182
2. Penguin Feathers & Bear Highlights	0015
3. Light Gray Penguin Shading	0131
4. Gray Penguin Shading	0152
5. Dark Gray Penguin Head & Feet	0132
6. Light Gray Bear Fur	0142
7. Gray Bear Outlines	0108
8. Eyes, Mouth, Face, & Beak	0020

CM556_48 JUMBO Penguin Tower

1. Bear Fur	0182
2. Penguin Feathers & Bear Highlights	0015
3. Light Gray Penguin Shading	0131
4. Gray Penguin Shading	0152
5. Penguin Head, Feet, & Shading	0132
6. Light Gray Bear Shading	0142
7. Scarf	3350
8. Scarf Shading	3130
9. Scarf Outlines	2900
10. Gray Bear Outlines	0108
11. Paws & Faces	0020

CM557_48 Nice Hat

1. Penguin Feathers	0015
2. Light Gray Feathers	0131
3. Gray Feathers Shading	0152
4. Dark Gray Head, Feet & Shading	0132
5. Faces	0020
6. White on Scarf	0101
7. Red on Scarf	2101
8. Dark Red Scarf Outlines	2123
9. Green on Hat	5500
10. Light Blue on Hat	3910
11. Dark Blue on Hat	3900

CM558_48 Cool Penguin

1. Feathers & Lenses	0015
2. Gray Shading	0131
3. Gray Shading	0152
4. Head, Feet & Shading	0132
5. Vest	5610
6. Vest Shading	5633
7. Vest Highlights	5650
8. Yellow on Hat	0600
9. Orange Hat & Lenses	1304
10. Red on Hat	2101
11. Goggles Highlights	7003
12. Beak	0020
13. Goggles	0776
14. Goggles Straps	3815

CM559_48 Tummyslide

1. Feathers	0015
2. Light Gray Highlights	0131
3. Gray Shading	0152
4. Head, Feet & Fur	0132
5. Eyes & Beak	0020
6. Light Purple Scarf	2640
7. Purple on Scarf	2910
8. Dark Purple Scarf Outlines	3541
9. Swirls	3810

CM560_48 Penguin in Stripes

1. Feathers	0015
2. Light Gray Shading	0131
3. Dark Gray Outlines	0152
4. Hat & Scarf	0101
5. Red Hat & Scarf Stripes	2011
6. Head, Feet & Shading	0132
7. Face	0020

CM561_48 Figure Skating Penguin

1. White Feathers	0015
2. Light Gray Feathers & Blades	0131
3. Pink on Scarf	2560
4. Dark Gray Outlines	0152
5. Head & Feet	0132
6. Face	0020
7. Dark Pink Scarf	2504
8. Swirls	3810

CM562_48 Figure 8

1. Figure Eight	3810
2. White Feathers	0015
3. Light Gray Shading & Blades	0131
4. Dark Gray Outlines	0152
5. Head, Feet & Feathers	0132
6. Eyes & Beak	0020
7. Orange on Hat	0800
8. Orange Hat Shading	0821
9. Hat Stripes & Straps	2011

CM563_48 Stitch 'n' Turn Penguin

1. Penguin Placement Stitch	0020
2. Face & Arm	0015
3. Belly Placement Stitch	0020
4. Cut Line & Tackdown	0152
5. Cover Stitch & Mouth	0152
6. Eyes	0020
7. Seam Stitch	4174

Instructions

1. Hoop a single layer of Mesh Cut-Away stabilizer.
2. Spray the stabilizer lightly with Temporary Adhesive Spray.
3. Stitch the first color, which is the "Placement Guide Stitch".
4. Place a piece of fabric right side up onto the Mesh Stabilizer, being sure to cover the "Placement Guide Stitch". See **Photo 1**.
5. Lightly spray a piece of Wash-Away topping with Temporary Adhesive Spray. Place the topping sprayed side down onto the fabric.
6. Attach the hoop to the machine and select the design of your choice to stitch. Embroider all but the last color of the design. See **Photo 2**.
7. Remove the hoop from the machine, but DO NOT remove the fabric from the hoop.
8. Clip all jump threads.
9. Gently tear away excess Wash-Away topping. (Do not wet to remove at this time).
10. Place another piece of fabric right side down directly over the first piece. If desired, pin or tape at corners to secure.
11. Reattach the hoop to the machine and stitch the final color change (through both layers of fabric).
12. Remove the hoop from the machine and the fabric from the hoop.
13. Using embroidery scissors, carefully cut out the stitch n turn project close to the stitching line. Clip curves as needed.
14. Cut a slit approximately 1 ½" long in the back (non-embroidered side). See **Photo 3**.
15. Turn the animal right side out. Use a chopstick to turn out corners and curves. See **Photo 4**.
16. Stuff as desired with polyester stuffing.
17. Slip stitch the slit closed.

Supplies:

- 2 pieces of fabric one inch larger than chosen design
- We suggest using Minkee® fabric for Stitch-n-turn animals
- Mesh Cutaway Stabilizer
- Washaway topping
- Temporary Spray Adhesive
- Embroidery Thread
- Polyester bobbin thread
- Embroidery machine
- Polyester stuffing (extra soft stuffing is recommended)
- Hand needle

NOTE: Some designs may contain a Ribbon Placement Guide. This is an optional feature that allows you to turn your animals into ornaments if you so wish. To create a hanging loop, after stitching the Ribbon Placement Guide, create a loop out of 1/4" ribbon and place it within the guide with loop facing in and tails of the ribbon facing out. Lightly spray ribbon with Temporary Adhesive Spray to hold in place.



Photo 1

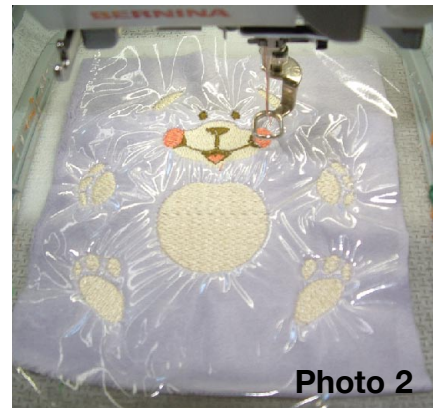


Photo 2

For Extra Fun:

Add definition stitching with a sewing machine or by hand.

Stitch ribbon bows or embellishments on your projects to dress them up. Please keep in mind the age of the person to be using the and plan (or omit) add-ons accordingly.



Photo 3

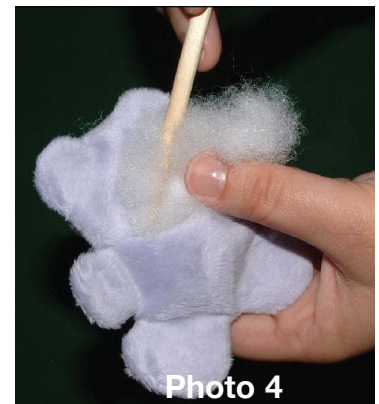


Photo 4