

Note: Some designs in this collection may have been created using unique special stitches and/or techniques. To preserve design integrity when rescaling or rotating designs in your software, always rescale or rotate designs using the handles directly on-screen.



NC078_48 Kitten Appliqué
3.39 X 2.77 in.
86.11 X 70.36 mm
5,110 St. ❁



NC079_48 Blue Butterfly Appliqué
2.88 X 2.41 in.
73.15 X 61.21 mm
6,563 St. ❁



NC080_48 Green Butterfly Appliqué
2.99 X 2.64 in.
75.95 X 67.06 mm
5,512 St. ❁



NC081_48 Flying Bird Appliqué
3.91 X 3.08 in.
99.31 X 78.23 mm
7,708 St. ❁



NC082_48 Pair of Birds Appliqué
4.83 X 5.33 in.
122.68 X 135.38 mm
11,114 St. ❁ L



NC083_48 Pretty Bird Appliqué
4.64 X 5.35 in.
117.86 X 135.89 mm
8,531 St. ❁ L



NC084_48 Tulips 1 Appliqué
4.87 X 5.02 in.
123.70 X 127.51 mm
9,805 St. ❁ L



NC085_48 Tulips 2 Appliqué
3.48 X 4.84 in.
88.39 X 122.94 mm
6,232 St. ❁



NC086_48 Tea Pot Appliqué
2.73 X 2.81 in.
69.34 X 71.37 mm
4,482 St. ❁



NC087_48 Tea Cup Appliqué
1.77 X 2.70 in.
44.96 X 68.58 mm
3,201 St. ❁



NC088_48 Poodle Appliqué
4.18 X 3.87 in.
106.17 X 98.30 mm
9,832 St. ❁



NC089_48 Silver Filigree Accent
1.70 X 2.49 in.
43.18 X 63.25 mm
2,130 St. ❁

❁ Design contains a loose fill.
❁ Some white areas shown are not stitched.

L Design is larger than 5" (127 mm) in either direction.
S Design is smaller than 1.5" (38.1 mm) in either direction.

Note: Some designs in this collection may have been created using unique special stitches and/or techniques. To preserve design integrity when rescaling or rotating designs in your software, always rescale or rotate designs using the handles directly on-screen.



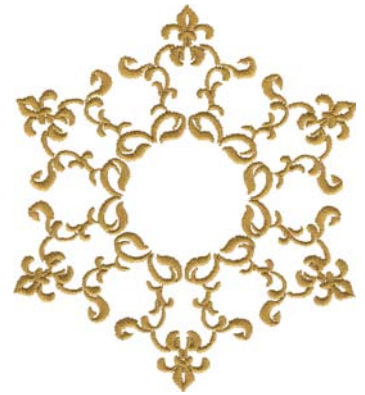
NC090_48 Gold Filigree Accent
2.26 X 2.53 in.
57.40 X 64.26 mm
2,610 St. ❁



NC091_48 Filigree Border
.77 X 5.59 in.
19.56 X 141.99 mm
3,216 St. ❁ L S



NC092_48 Filigree Corner
4.37 X 4.37 in.
111.00 X 111.00 mm
4,133 St. ❁



NC093_48 Filigree Medallion
4.22 X 4.84 in.
107.19 X 122.94 mm
12,392 St. ❁



NC094_48 JUMBO Frame
5.09 X 7.13 in.
129.29 X 181.10 mm
13,174 St. ❁ L



NC095_48 Victorian Boot Appliqué
3.34 X 3.35 in.
84.84 X 85.09 mm
6,903 St. ❁



NC096_48 Cameo 1 Appliqué
3.62 X 4.70 in.
91.95 X 119.38 mm
11,126 St.



NC097_48 Cameo 2 Appliqué
3.62 X 4.70 in.
91.95 X 119.38 mm
11,012 St.



NC098_48 Cameo 3 Appliqué
3.62 X 4.70 in.
91.95 X 119.38 mm
9,355 St. ❁



NC099_48 Lady With Parasol Jumbo Appliqué
7.81 X 9.90 in.
198.37 X 251.46 mm
27,060 St. ❁ L

❁ Design contains a loose fill.
❁ Some white areas shown are not stitched.

L Design is larger than 5" (127 mm) in either direction.
S Design is smaller than 1.5" (38.1 mm) in either direction.

Listings below indicate color sample, stitching order and suggested thread color number in Isacord, YLI Fine Metallic, Yenmet or YLI Variegated threads.

NC078_48 Kitten Appliqué

1. Background Swirls.....	0150
2. Placement Stitch.....	0150
3. Cut Line & Tackdown.....	0150
4. Dark Brown Swirls.....	1876
5. Cover Stitch.....	4240

NC079_48 Blue Butterfly Appliqué

1. Placement Stitch.....	3910
2. Cut Line & Tackdown.....	3910
3. Cover Stitch.....	3910
4. Dark Brown Swirls.....	1876

NC080_48 Green Butterfly Appliqué

1. Background Swirls.....	0822
2. Wing Placement Stitch.....	0453
3. Tackdown.....	0453
4. Cover Stitch.....	0453
5. Butterfly Body & Swirls.....	1876

NC081_48 Flying Bird Appliqué

1. Background Swirls.....	0150
2. Placement Stitch.....	0651
3. Cut Line & Tackdown.....	0651
4. Cover Stitch.....	0651
5. Dark Brown Swirls.....	1876

NC082_48 Pair of Birds Appliqué

1. Branch Swirls.....	0822
2. Left Bird Placement Stitch.....	0020
3. Left Bird Cut Line & Tackdown.....	4174
4. Left Bird Cover Stitch.....	3910
5. Right Bird Placement Stitch.....	0020
6. Right Bird Cut Line & Tackdown.....	4174
7. Right Bird Cover Stitch.....	0453
8. Dark Brown Swirls.....	1876

NC083_48 Pretty Bird Appliqué

1. Placement Stitch.....	4240
2. Cut Line & Tackdown.....	4240
3. Cover Stitch.....	4240
4. Branch Swirls.....	0822
5. Dark Brown Swirls.....	1876

NC084_48 Tulips 1 Appliqué

1. Leaves & Flowers.....	0853
2. Placement Stitch.....	2153
3. Cut Line & Tackdown.....	2153
4. Cover Stitch.....	2153
5. Dark Brown Flower Shading.....	1876

NC085_48 Tulips 2 Appliqué

1. Leaf & Vines.....	0853
2. Flower Placement Stitches.....	2153
3. Tackdown.....	2153
4. Cover Stitches.....	2153
5. Flower Swirls.....	1876

NC086_48 Tea Pot Appliqué

1. Placement Stitch.....	0651
2. Cut Line & Tackdown.....	0651
3. Cover Stitch.....	0651
4. Dark Brown Swirls.....	1876

NC087_48 Tea Cup Appliqué

1. Background Swirls.....	0150
2. Placement Stitch.....	0150
3. Cut Line & Tackdown.....	0150
4. Dark Brown Swirls.....	1876
5. Cover Stitch.....	2153

NC088_48 Poodle Appliqué

1. Background Swirls.....	0150
2. Poodle Placement Stitch.....	3910
3. Tackdown.....	3910
4. Cover Stitch.....	3910
5. Poodle Swirls.....	1876

NC089_48 Silver Filigree Accent

1. Single Color Design.....	0150
-----------------------------	------

NC090_48 Gold Filigree Accent

1. Single Color Design.....	0822
-----------------------------	------

NC091_48 Filigree Border

1. Single Color Design.....	0822
-----------------------------	------

NC092_48 Filigree Corner

1. Single Color Design.....	0822
-----------------------------	------

NC093_48 Filigree Medallion

1. Single Color Design.....	0822
-----------------------------	------

NC094_48 JUMBO Frame

1. Single Color Design.....	0822
-----------------------------	------

NC095_48 Victorian Boot Appliqué

1. Background Swirls.....	0150
2. Placement Stitch.....	3910
3. Cut Line & Tackdown.....	3910
4. Cover Stitch.....	3910
5. Dark Brown Swirls.....	1876

NC096_48 Cameo 1 Appliqué

1. Placement Stitch.....	2153
2. Cut Line & Tackdown.....	2153
3. Dark Brown Shading.....	1876
4. Light Brown Swirls.....	0853
5. Cover Stitch.....	2153

NC097_48 Cameo 2 Appliqué

1. Placement Stitch.....	2153
2. Cut Line & Tackdown.....	2153
3. Dark Brown Shading.....	1876
4. Light Brown Swirls.....	0853
5. Cover Stitch.....	2153

NC098_48 Cameo 3 Appliqué

1. Placement Stitch.....	2153
2. Cut Line & Tackdown.....	2153
3. Dark Brown Shading.....	1876
4. Light Brown Swirls.....	0853
5. Cover Stitch.....	2153

NC099_48 Lady With Parasol Jumbo Appliqué

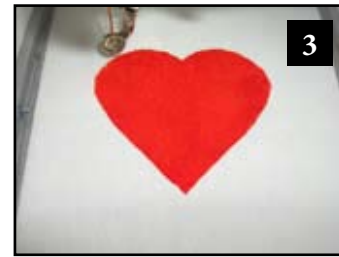
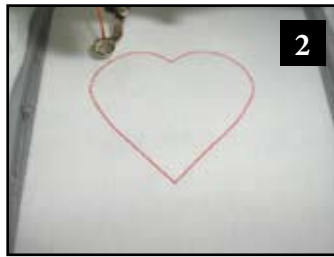
1. Background Swirls.....	0822
2. Handle.....	1876
3. Figure Placement Stitch.....	0651
4. Tackdown.....	0651
5. Cover Stitch.....	0651
6. Parasol Placement Stitch.....	0453
7. Tackdown.....	0453
8. Cover Stitch.....	0453
9. Figure Swirls.....	1876
10. Parasol Swirls.....	2153

NOTE: Appliqué Fabric Not Included.

1. Print out the necessary pages from the PDF of the appliqué pattern(s).
2. Mark the right side of the pattern pieces so you'll know which direction to lay the pattern on the fabric.
3. Lightly spray the wrong side of the pattern pieces with temporary adhesive spray and allow it to set for a few minutes.
4. Place the pattern pieces on the right side of the fabric and carefully cut them out. **PHOTO 1**
5. Sew the placement stitch on your hooped fabric. **PHOTO 2**
6. With the paper still stuck to the right side of the appliqué fabric, spray the wrong side of the fabric with temporary spray adhesive.
7. Place the fabric inside the sewing placement stitch so that it matches the stitching line then remove the paper pattern. **PHOTO 3**
8. Sew the tackdown. **PHOTO 4**
9. Sew the remainder of the design and repeat for any remaining pieces. **PHOTO 5**

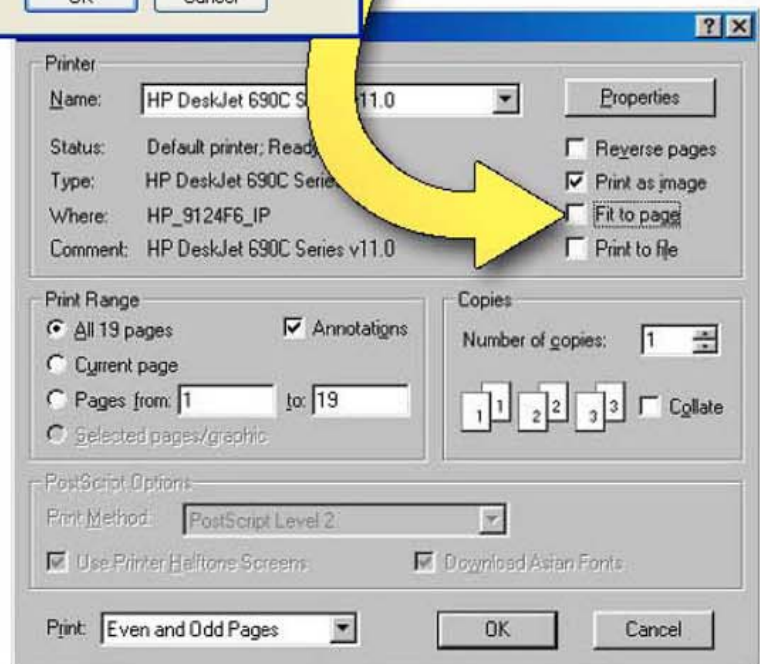
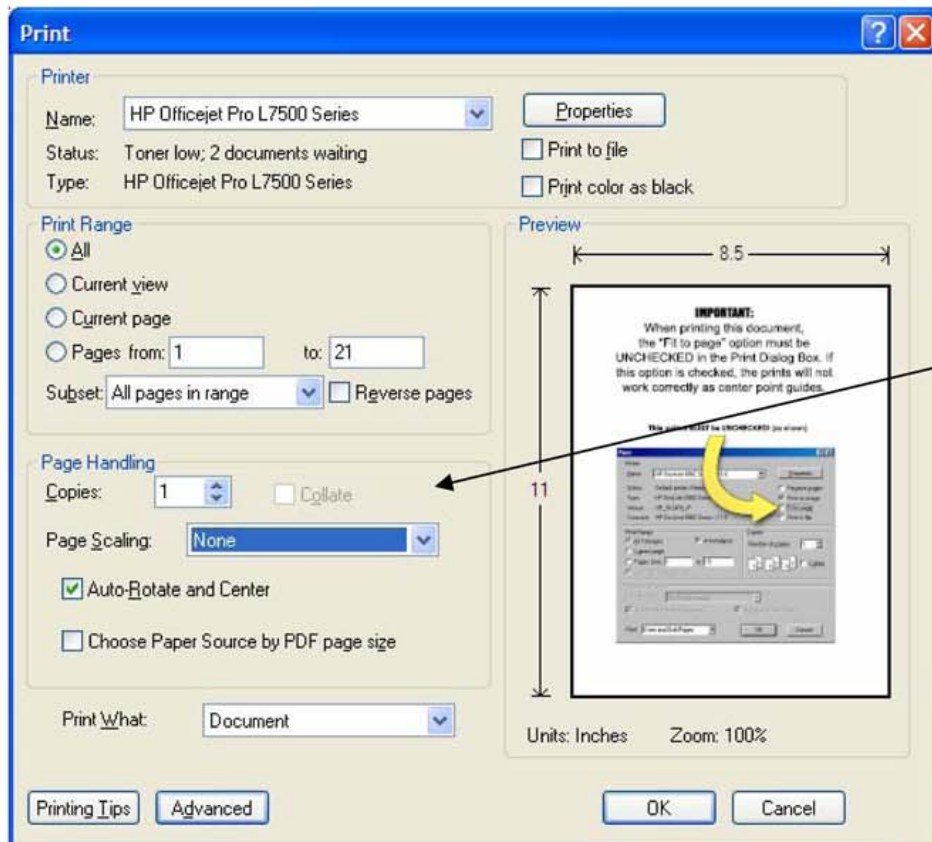
NOTE: The patterns are sized for the designs as they were made. If you resize the design, you will need to resize the pattern the same amount. You can print out the pattern at the normal size then copy it on a copy machine at the changed size, i.e. resize the designs to 80%, resize the printed pattern to 80%.

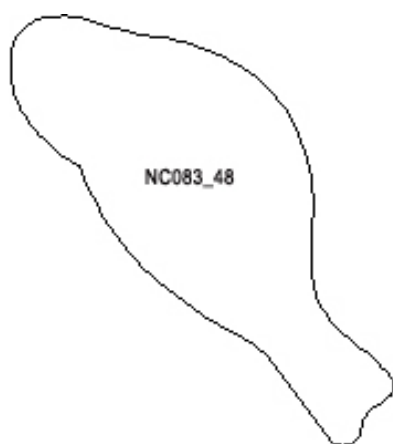
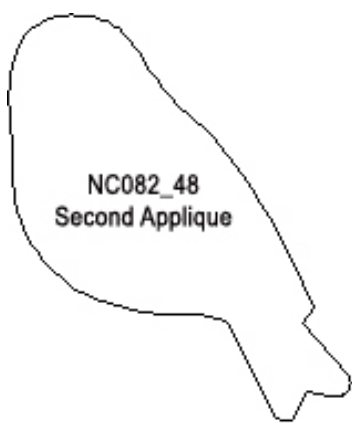
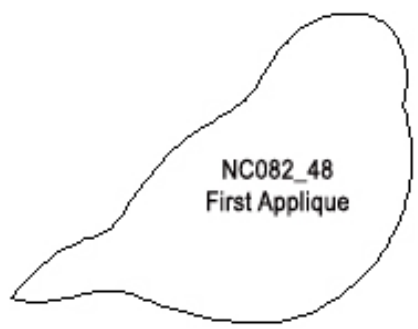
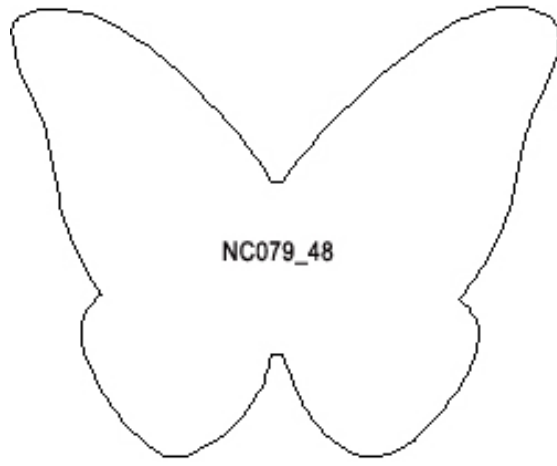
TIP: When Printing the patterns, make sure that the “Fit to page” option is UNCHECKED in the Print Dialog Box. If this option is checked the printed patterns will not be actual size.

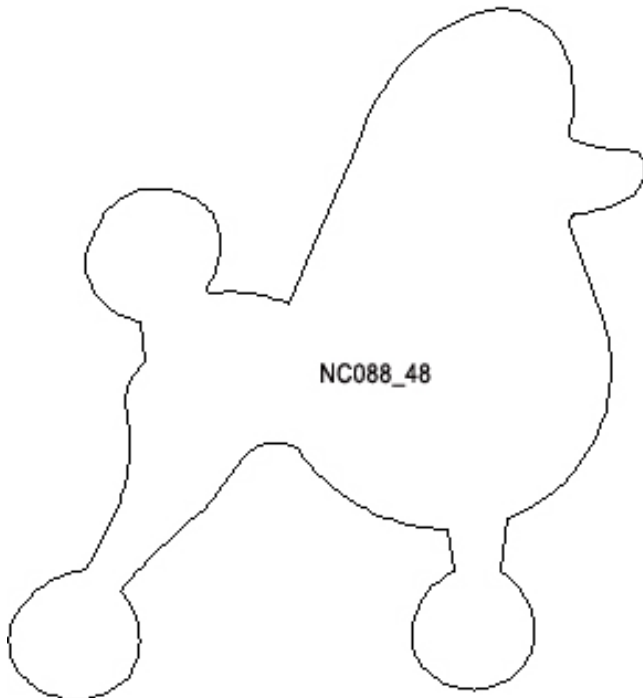


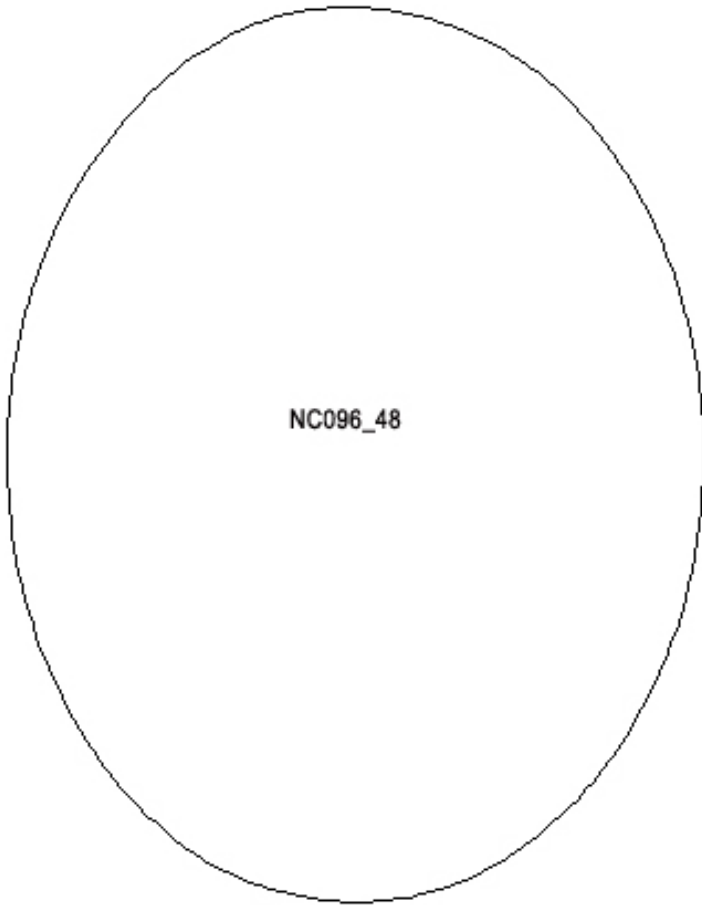
IMPORTANT:

When printing this document, the “Fit to page” option must be **UNCHECKED** or the “Page Scaling” option must be set to **NONE** depending on your printers options. If this option is set incorrectly, the prints will not work correctly as patterns because they will not print at actual size.

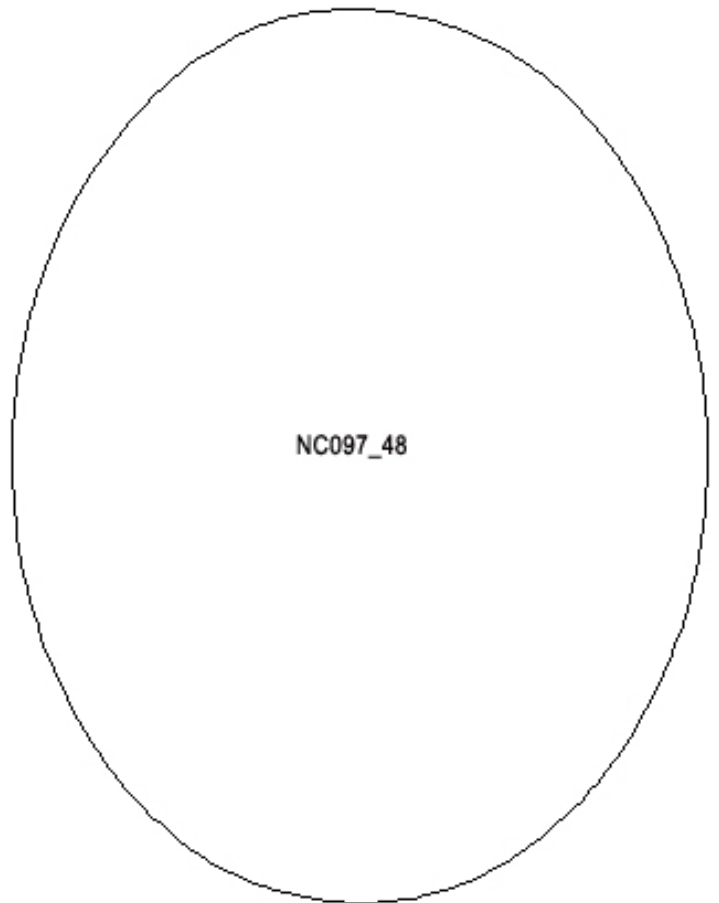




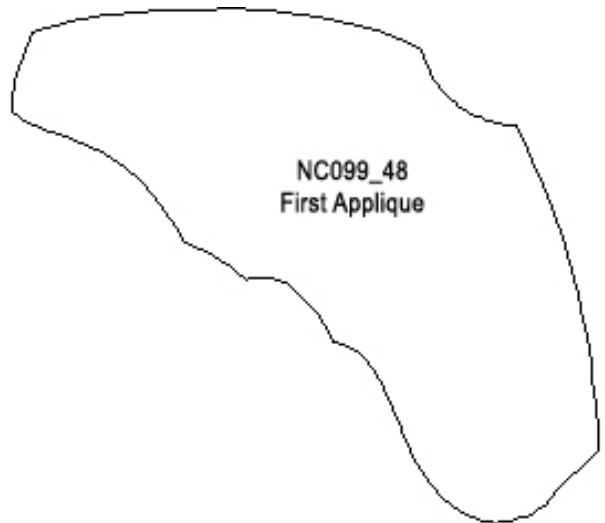
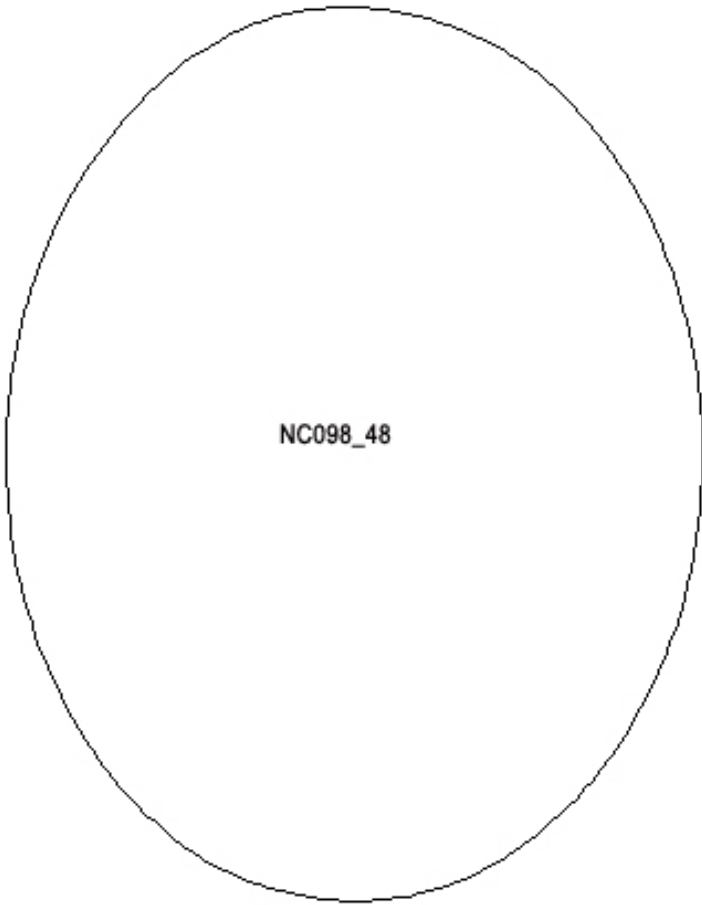


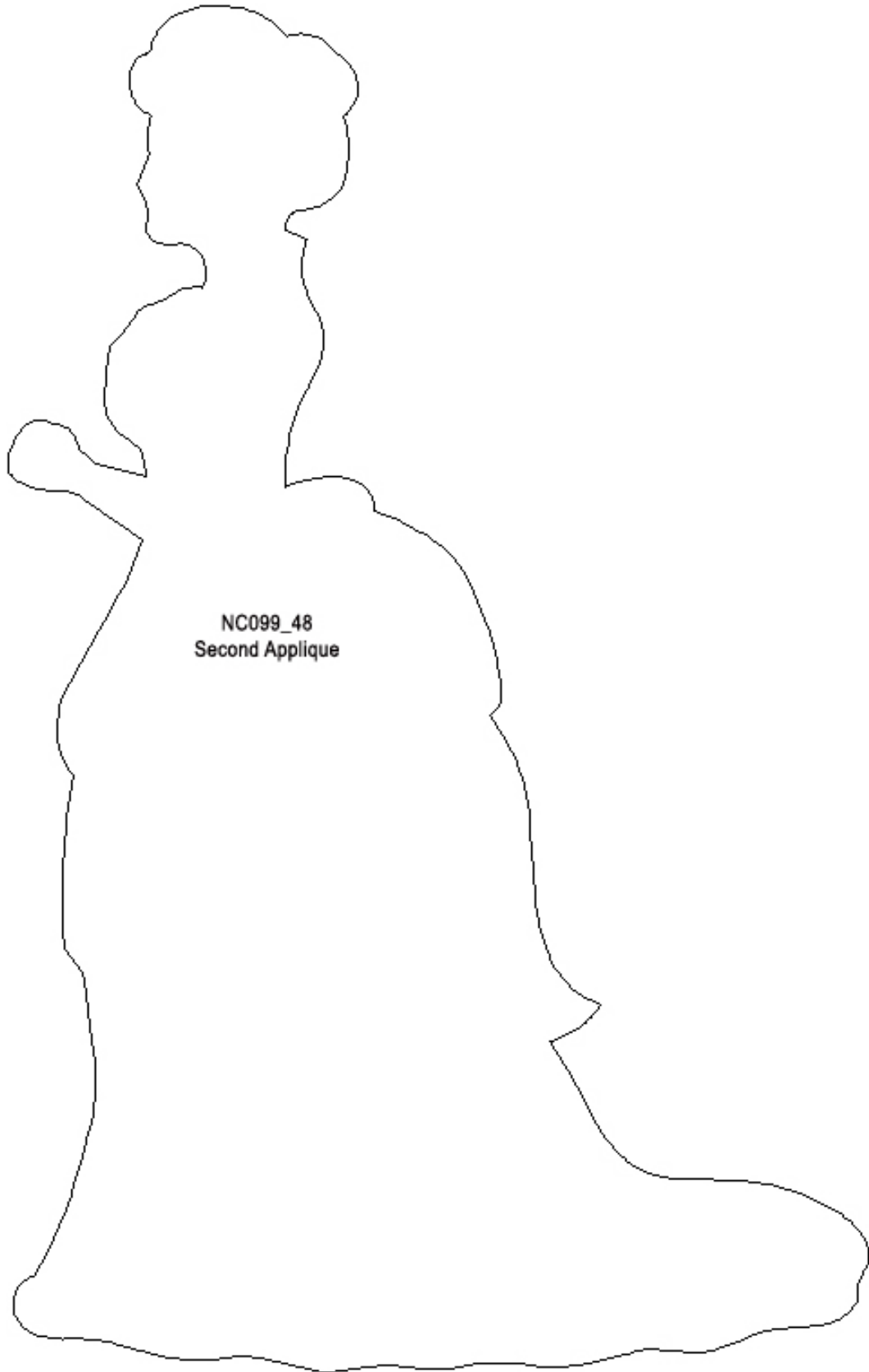


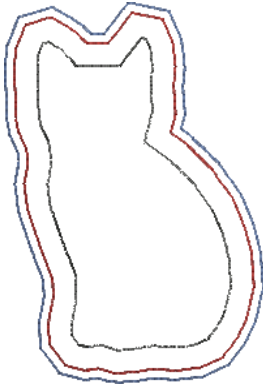
NC096_48



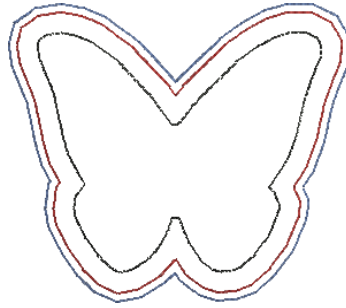
NC097_48



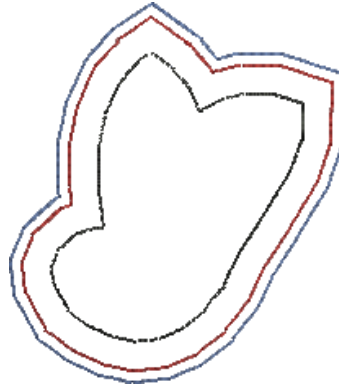




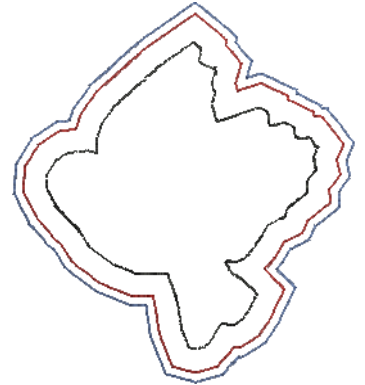
NC078_48_CWA For Use With the
Bernina CutWork Accessory
2.22 X 3.24 in.
56.39 X 82.30 mm
1,704 St.



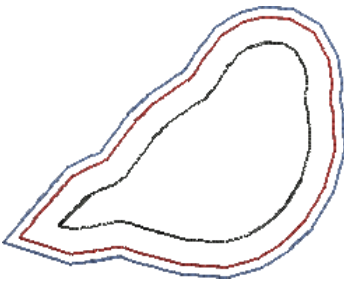
NC079_48_CWA For Use With the
Bernina CutWork Accessory
3.33 X 2.87 in.
84.58 X 72.90 mm
2,173 St.



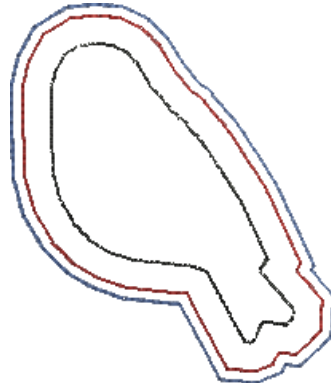
NC080_48_CWA For Use With the
Bernina CutWork Accessory
2.29 X 2.57 in.
58.17 X 65.28 mm
1,371 St.



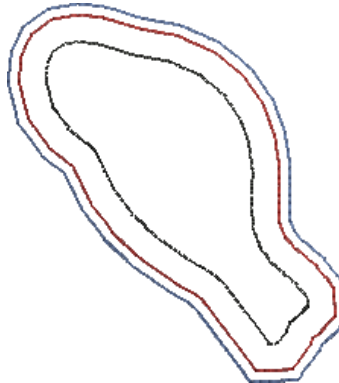
NC081_48_CWA For Use With the
Bernina CutWork Accessory
2.98 X 3.30 in.
75.69 X 83.82 mm
1,872 St.



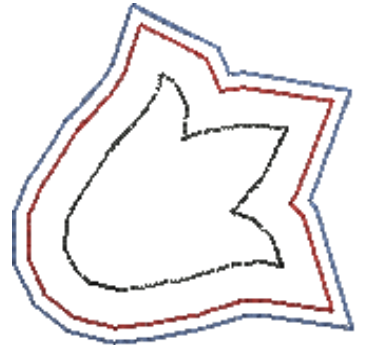
NC082_48_CWA01 For Use With the
Bernina CutWork Accessory
2.73 X 2.13 in.
69.34 X 54.10 mm
1,241 St.



NC082_48_CWA02 For Use With the
Bernina CutWork Accessory
2.27 X 2.64 in.
57.66 X 67.06 mm
1,425 St.



NC083_48_CWA For Use With the
Bernina CutWork Accessory
2.50 X 2.76 in.
63.50 X 70.10 mm
1,418 St.



NC084_48_CWA01 For Use With the
Bernina CutWork Accessory
1.80 X 1.78 in.
45.72 X 45.21 mm
996 St.



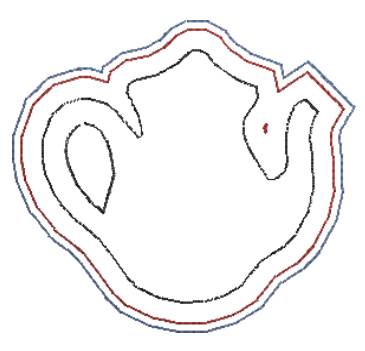
NC084_48_CWA02 For Use With the
Bernina CutWork Accessory
2.02 X 2.02 in.
51.31 X 51.31 mm
995 St.



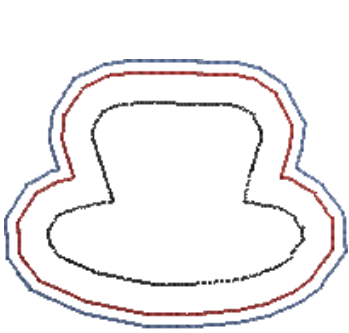
NC085_48_CWA01 For Use With the
Bernina CutWork Accessory
1.89 X 1.76 in.
48.01 X 44.70 mm
1,034 St.



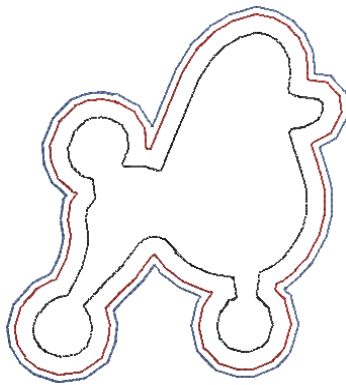
NC085_48_CWA02 For Use With the
Bernina CutWork Accessory
1.75 X 1.89 in.
44.45 X 48.01 mm
1,030 St.



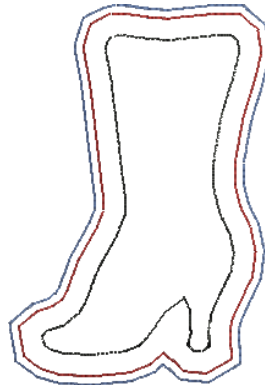
NC086_48_CWA For Use With the
Bernina CutWork Accessory
3.24 X 2.91 in.
82.30 X 73.91 mm
2,308 St.



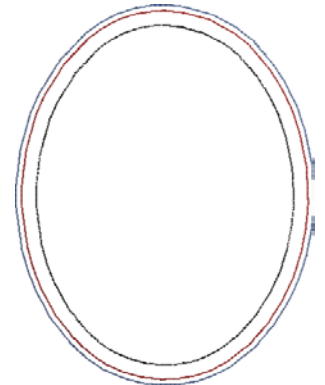
NC087_48_CWA For Use With the
Bernina CutWork Accessory
2.23 X 1.73 in.
56.64 X 43.94 mm
1,137 St.



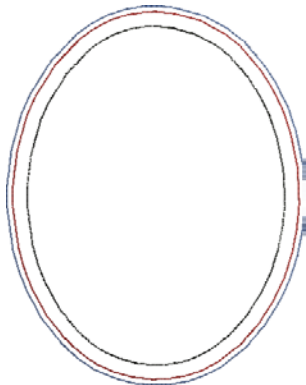
NC088_48_CWA For Use With the
Bernina CutWork Accessory
3.80 X 4.13 in.
96.52 X 104.90 mm
3,381 St.



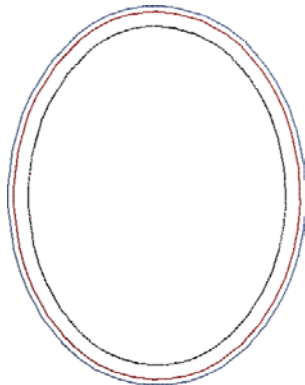
NC095_48_CWA For Use With the
Bernina CutWork Accessory
2.39 X 3.46 in.
60.71 X 87.88 mm
2,001 St.



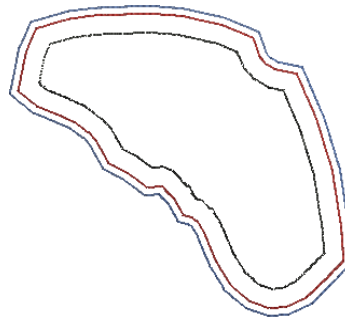
NC096_48_CWA For Use With the
Bernina CutWork Accessory
4.09 X 5.16 in.
103.89 X 131.06 mm
2,676 St. **L**



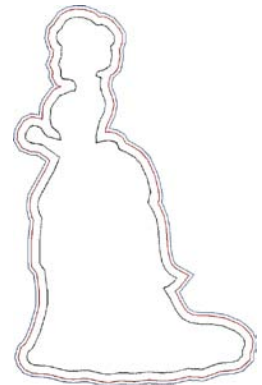
NC097_48_CWA For Use With the
Bernina CutWork Accessory
4.09 X 5.16 in.
103.89 X 131.06 mm
2,676 St. **L**



NC098_48_CWA For Use With the
Bernina CutWork Accessory
4.09 X 5.16 in.
103.89 X 131.06 mm
2,676 St. **L**



NC099_48_CWA01 For Use With the
Bernina CutWork Accessory
3.58 X 3.19 in.
90.93 X 81.03 mm
2,061 St.



NC099_48_CWA02 For Use With the
Bernina CutWork Accessory
5.89 X 9.17 in.
149.61 X 232.92 mm
6,045 St. **L**

SUPPLIES

- Cut-Away Stabilizer
- Temporary Spray Adhesive
- Appliqué Fuse & Fix Stabilizer
- Embroidery Thread
- Stabilizer that is appropriate for your project
- BERNINA® CutWork Accessory

PREPARE APPLIQUE FABRIC

1. Starch appliqué fabric 2-3 times following manufacturer's instructions.
2. Appliqué fabric should be crisp.
3. Iron Appliqué Fuse & Fix to the wrong side of the starched appliqué fabric following instructions on product packaging.

CUT APPLIQUE PIECES

1. Hoop one layer of Cut-Away Stabilizer.
2. Send first CWA file to the embroidery machine. (CWA files are the pre-cut appliqué files to use with the CutWork Accessory; these files will end in CWA01, CWA02, and CWA03 etc. The number of CWA files available for each design will depend upon how many separate appliqués each design contains.)
3. Stitch the first color, this will be the placement stitch.
4. Remove the hoop from the machine but do not remove the stabilizer from the hoop. Spray the hooped stabilizer with temporary spray adhesive. Lay prepared appliqué fabric over the placement stitch, being sure to completely cover the stitching. Apply pressure to appliqué fabric to ensure it is adhered.
5. Stitch the second color, this will be the basting stitch. It is meant to baste the appliqué fabric to your hooped stabilizer.
6. Replace normal stitch plate with the CutWork stitch plate.
7. Unthread the machine.
8. If necessary, turn off the upper thread control on your machine. Refer to your machine's user manual. Note that the most recent version of the 830 will perform this task automatically.
9. Replace embroidery needle with the CutWork Accessory.
10. Replace embroidery foot with foot #44 (If you do not have foot #44 you can leave foot #15 on the machine; foot #44 will simply keep the cut fabric from flagging as much).
11. Attach the hoop to the machine.
12. To cut the first appliqué piece follow the "thread changes" on your machine screen and turn the dial on the CutWork tool as required.
13. Remove the hoop from the machine.
14. Gently remove cut appliqué piece, trimming any thread that may have not been cut completely.

PHOTO 1

15. Repeat as needed for designs with multiple appliqué pieces.



TACKDOWN APPLIQUE AND COMPLETE EMBROIDERY DESIGN

1. Replace the embroidery needle and rethread the machine.
2. Replace the embroidery foot #15.
3. Spray hoop sized piece of stabilizer that is appropriate for your project and adhere to wrong side of background fabric or project that is to be hooped.
4. Hoop fabric/project and stabilizer.
5. Attach hoop to machine.
6. Send the embroidery file to the machine (this is not a CWA file).
7. Stitch design as normal following the thread changes on the provided thread chart stopping after each Appliqué Placement Stitch.

1. After stitching an Appliqué Placement Stitch, take the precut appliqué pieces required and peel off the cutaway backing and the release paper revealing a sticky backing. **PHOTO 2**
2. Remove hoop from machine, but do not remove the fabric from the hoop.
3. Adhere precut appliqué piece evenly over the Appliqué Placement Stitch; use pressure to make sure pieces stick well. **PHOTO 3**
4. Reattach hoop to machine.
5. Continue stitching design until all appliqué pieces are placed and all stitching is complete. **PHOTO 4**

NOTE: Design pictured is for instructional purposes and may not be included in this collection.

